



# PowerBrick+ 24v Lithium-Ion battery pack



## 24V battery pack - Lithium Iron-Phosphate (LiFePO<sub>4</sub>) - 32Ah

- **High Service Life** : 3000 cycles and more (see chart)
- **Deep discharge** allowed up to 100 %
- Ultra safe **Lithium Iron Phosphate** chemistry (no thermal run-away, no fire or explosion risks)
- **Embedded BMS** (Battery Management System) : **improve lifespan AND secure the battery**
- No **Lead**, no **rare earths**, no **acid**, no **degassing**
- Calendar life > **10 years**
- Excellent **temperature** robustness (-20 °C up to +60 °C)
- **Flexible deployment** : up to 16 packs in parallel and 2 in series
- **Constant power** during discharge (very low internal resistance)
- **Very low Peukert's losses** (energy efficiency >98 %)
- **Very low self discharge** (<3 % per month)
- **No memory effect**
- About **50 % lighter** and **40% smaller** than equivalent Lead-AGM battery with same usable energy
- **Certification** : CE, RoHS, UN 38.3

## Technical Specifications

|                    |  |   |
|--------------------|--|---|
| Electric           | Nominal voltage / Nominal capacity                 | 25.6V / 32Ah  |
|                    | Stored energy                                      | 819 Wh  |
|                    | Volumetric energy density / Specific energy        | 148.4 Wh/L / 120.4 Wh/Kg                              |
|                    | Internal resistance                                | ≤ 50mΩ  |
|                    | Cycles   | >3000 cycles (see chart)                              |
|                    | Self discharge                                     | < 3 % per month                                       |
|                    | Energy efficiency                                  | > 98%   |
| Standard Charge    | Charge voltage                                     | 28.8V ± 0.4V (Optional floating voltage : 26.72V max) |
|                    | Charge mode  | CC/CV : Constant Current / Constant Voltage           |
|                    | Continuous charge current / Maximum charge current | 16 A / 32 A   |
|                    | BMS charge cut-off voltage                         | 29.4V ± 0.2V  |
| Standard Discharge | Instant peak discharge current                     | 150 A ± 30 A (max 300ms)                              |
|                    | Continuous discharge current                       | 50 A (1.29 kW)  |
|                    | Maximum discharge current (< 30s)                  | 75 A (1.92 kW)  |
|                    | BMS discharge cut-off voltage                      | 20 V  |
| Environment        | Charge temperature range                           | 0°C to +60°C  |
|                    | Discharge temperature range                        | -20°C to +60°C  |
|                    | Storage temperature                                | 0°C to +50°C @60±25% relative humidity                |
|                    | IP protection level                                | IP 65   |
| Mechanical         | Type of cells                                      | Cylindrical   |
|                    | Casing material                                    | ABS   |
|                    | Dimensions   | L : 197mm x W : 166mm x H : 169 mm                    |
|                    | Weight   | 6.8 kg  |
|                    | Terminal   | M8 bolt   |



## APPLICATIONS

- **Electrical vehicules and utilities**
- **Solar and wind energy storage**
- **Marine**
- **Street lightning**
- **CCTV and security camera**
- **UPS, electric back-up**
- **Telecom**
- **Medical equipments**

...

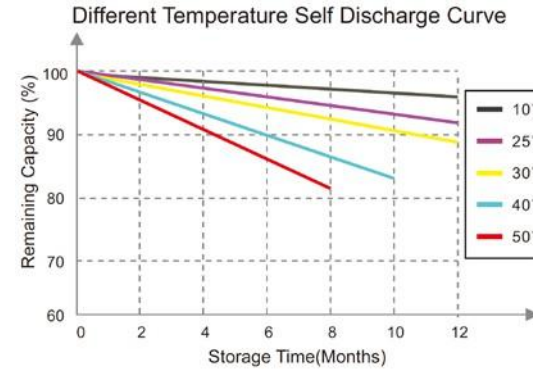
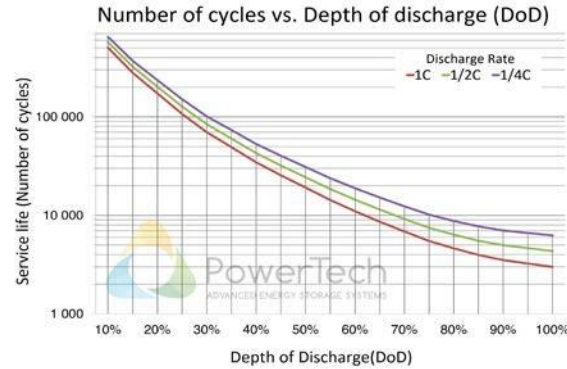
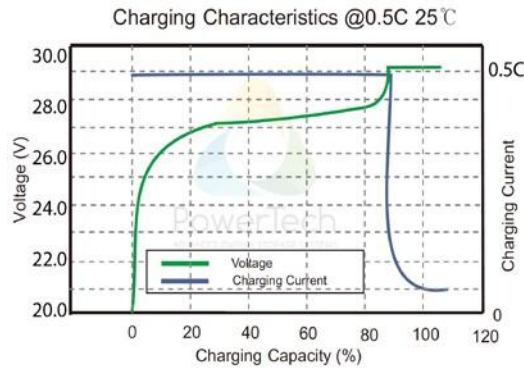
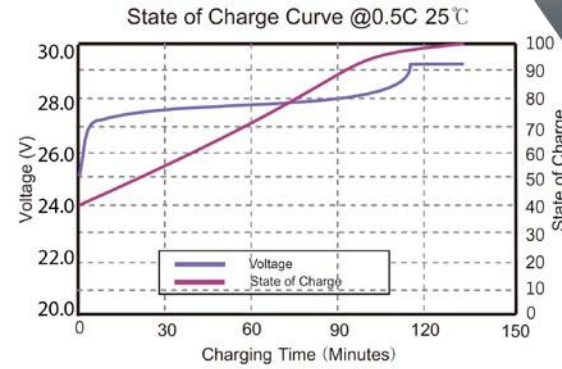
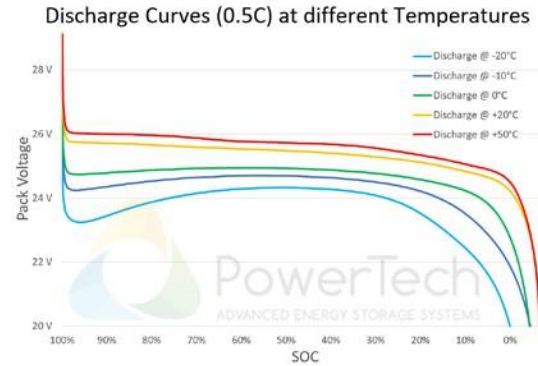
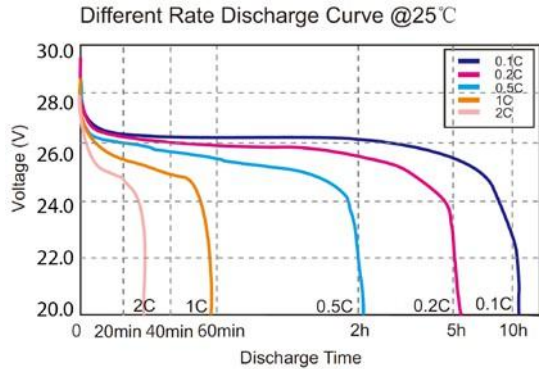


# PowerBrick+

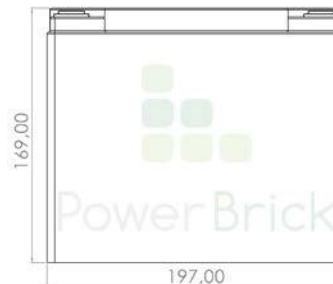
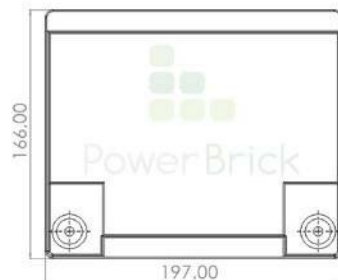
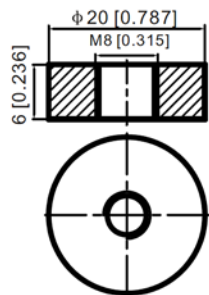
24v Lithium-Ion battery pack



## Charts and curves



## Dimensions



**Ship Control Srl**  
Via dei Ghivizzani 1743/B  
55054 Piano di Mommio (LU)  
P.IVA/C.F.: 04302910759

tel. +39.0584.1660878  
cell. +39.345.5625353  
[www.shipcontrolstore.it](http://www.shipcontrolstore.it)  
[info@shipcontrol.it](mailto:info@shipcontrol.it)  
[info@pec.shipcontrol.it](mailto:info@pec.shipcontrol.it)

