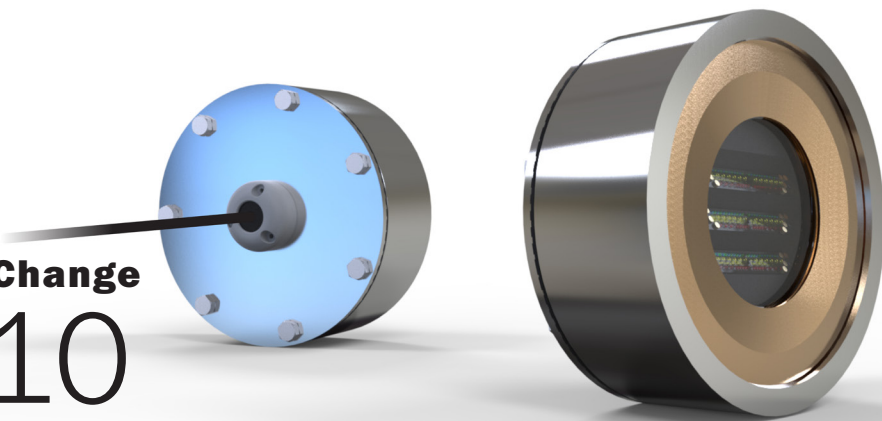




## EOS SY Series - Full Color Change

## SY300/310

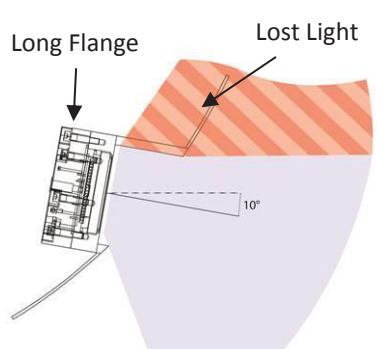

SY WELD-IN UNDERWATER LED LIGHT



New SY300 and SY310 models introduce a new concept in weld-in underwater light fixtures, making use of a patented internal 'Louvre' lens system, allowing Superyacht builders a flush-fit, weld-in flange for each and every underwater light location regardless of hull shape, a significantly easier installation. The louvered LED array of each light is adjusted internally to account for hull angles, eliminating the light lost in traditional long, angled tube flanges. Available in internal fitted SY300, and external fitted SY310, suitable for installation on transom, side hull, bulbous bow, and in water tanks, wet and black water areas (SY310 model may also be installed in fuel tanks) without further cofferdams or Delrin covers, providing even hull spacing and illumination around the vessel regardless of obstacles within the hull.

PART DESCRIPTION	SY300/310 SERIES EOS WELD-IN UNDERWATER LIGHT
Available Colors	Full Color Change (RGBW)
Lumens	37,350
Fixture Lumens (White)	16,600
Number & Type Of LED	White - 36 x 10W, Green - 36 x 3W, Blue - 36 x 3W, Red - 48 x 3W
LED Power - HICOB Array	Yes
Typical LED Life	50,000+ Hours
Warranty	3 Years*
User Control Options	EOS STV 2202

\*Subject to commissioning review

Traditional Weld-in Lights	SY300/310 Weld-In Lights
	

## EOS SY Series - Full Color Change

## SY300/310

SY WELD-IN UNDERWATER LED LIGHT



## TECHNICAL

Driver	Multi-Channel External Driver
Supply Voltage Range	Integrated AC Driver (90-240V AC) 24 VDC option also available
Max Current Draw (AC)	2.1 A
Surge Protection	Yes (3,000V)
ATRB (Automatic Thermal Roll-Back)	Yes
Low Voltage Protection	Automatic Voltage Roll-Back Control, and Low Voltage Cut-Out
Auto Power Control	Yes - Intelligent Multi-Channel Power Mgmt
"Soft Start" Electronics Protection	Yes
Reverse Polarity Protection	Yes
In Rush Current Protection	Yes
Power Line Noise Suppression	Yes
Communication Protocol	Lumi-DMX (DMX-512/RDMX Compatible)

## PHYSICAL

Beam Angle	110°
Water Ingress Protection Rating	IP68
Flange Diameter	187mm (7.36")
Light Angle Options	Fits any hull angle (0° to 50°)
Flange Angle Options (Degrees)	0° (Flush)
Flange Material Options	Aluminum (5083L), Stainless Steel (316L)
Light Cable Length	3m (9'8") Standard ( <i>Extension cables available</i> )
Vessel Length	25m and above
Installation Locations	Transom, Side, Bulbous Bow, Water Tank Fuel Tank Installation (SY310 only)

## LIGHTING SYSTEM FUNCTIONALITY

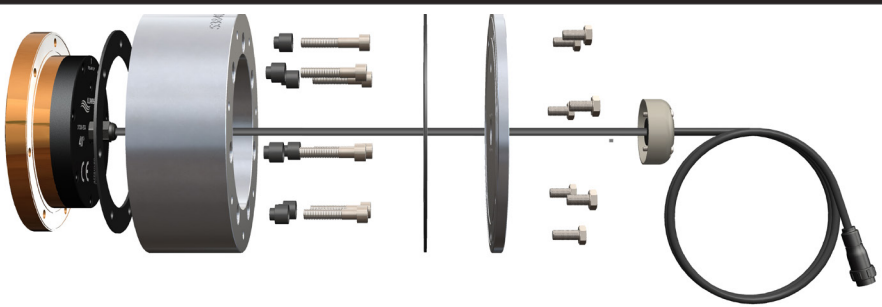
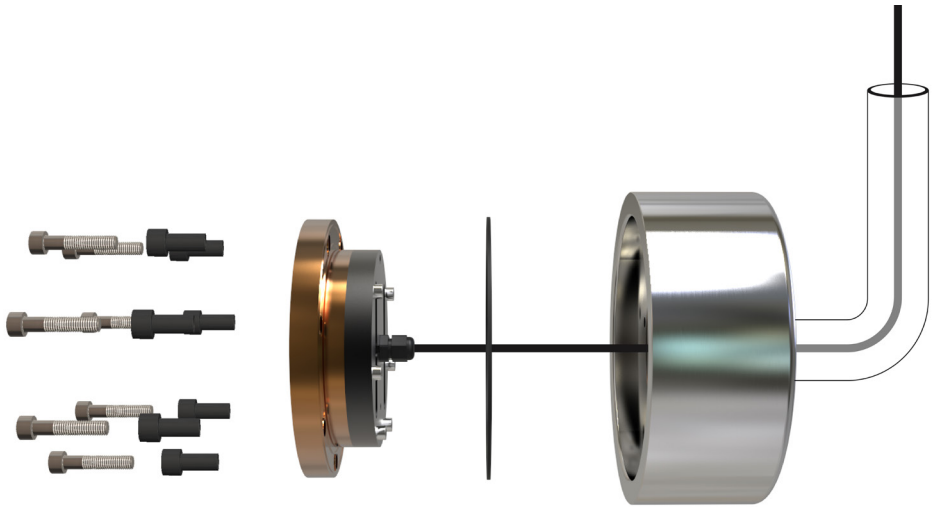
Manufacturer Preset Colors	Yes
Lights Synchronized (All Lights, All Colors, All Models)	Yes
Color Cycle	Yes
Cycle Speed Adjust	Yes
Color Sweep	Yes
Color Sweep Speed Adjust	Yes
Customizable Favorites	Yes
Fixed Strobe (Any Color)	Yes
Random Strobe Mode (Any Color)	Yes
Customizable Strobe Mode	Yes
Programmable Scenes	Yes
Wi-Fi Control (App)	Yes
External DMX/RDMX	Yes
Individually Addressable Lights	Yes
Sound-To-Light	Yes
Groups	Yes
Automatic Light Discovery and Setup	Yes
Light Brightness Adjustment	Yes
Diagnostic Function	Yes

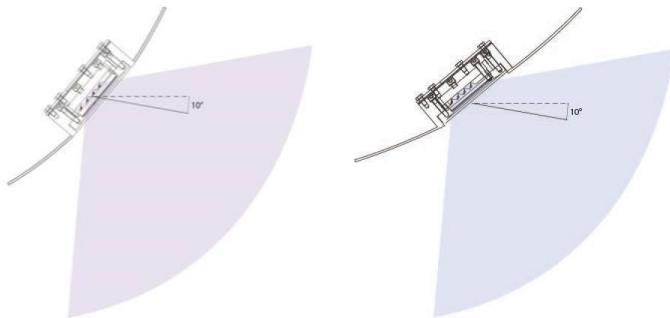
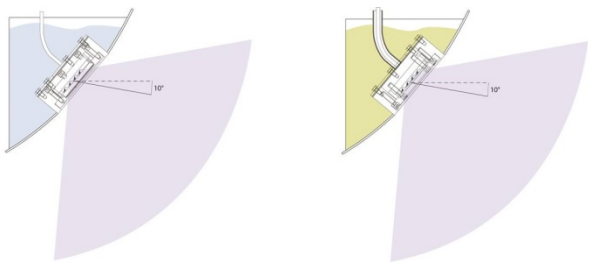
## SY 300



## SY 310



SY300/310 EXPLODED VIEW	
SY300 INTERNALLY MOUNTED	
SY310 EXTERNALLY MOUNTED	

SY300/310 INSTALLATION EXAMPLES	
Install from shallow to steep hull drafts whilst maintaining the same light beam angle output.	
Tank installation options to maintain even spacing. Internal and external fitted options.	

INTENTIONALLY BLANK